

RESIDE IN A GOLDEN NEIGHBOURHOOD,
LET YOUR LIFE SHIMMER.

FREEHOLD

康邻豪庭
KLIMT CAIRNHILL

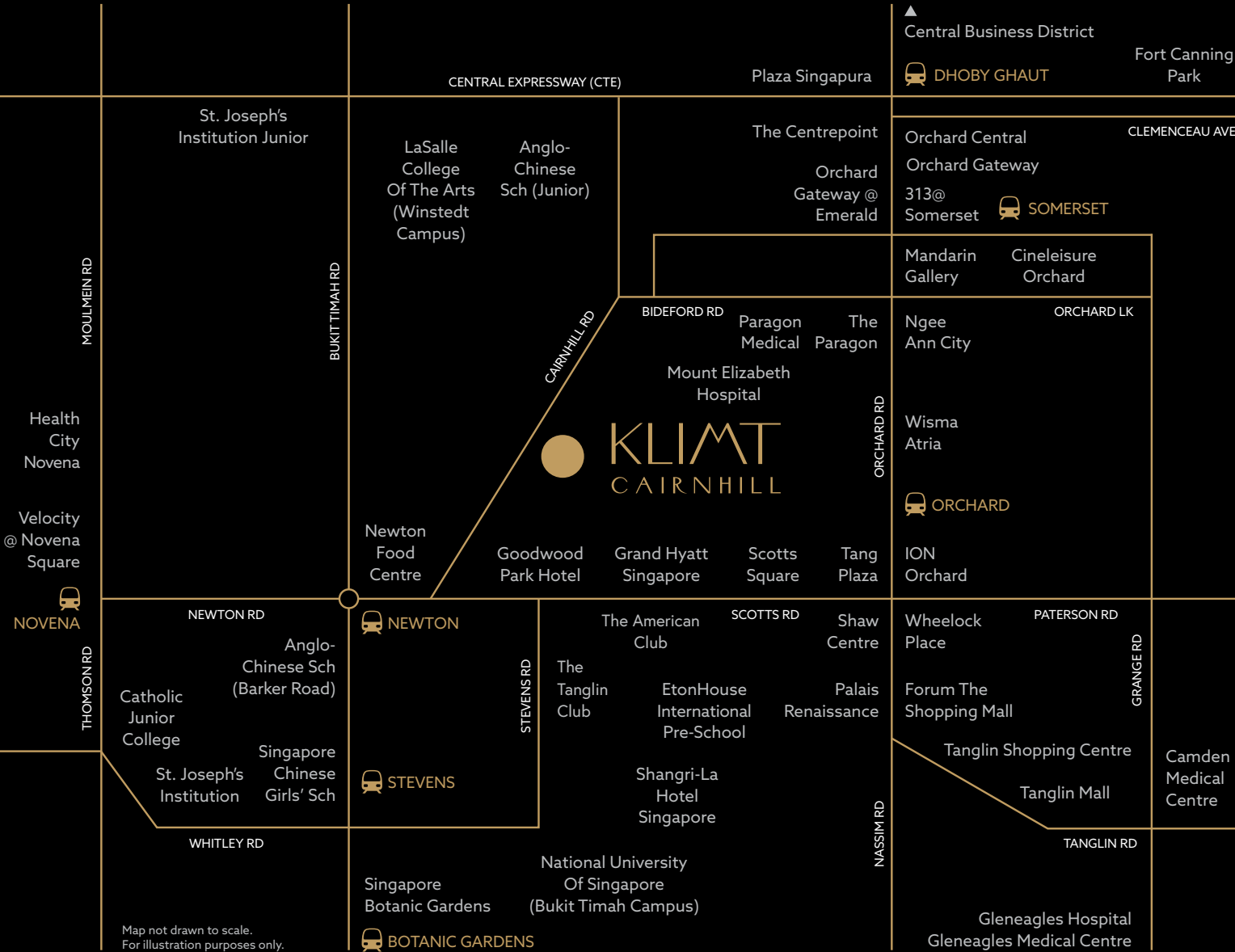




THE HEART'S DESIRES IN THE CITY'S HEART.



With the world-renowned luxury shopping district for your walk-in wardrobe, and the myriad of Singapore's diverse culinary offerings for your dining room, your home is right in the heart of the city.



SHOPPING / F&B

8 MINS WALK
Orchard Shopping Belt
Newton Food Centre

1 MRT STOP
Velocity @
Novena Square

2 MRT STOPS
Plaza Singapura

4 MRT STOPS
Holland Village

9 MINS DRIVE
Marina Bay Sands
Esplanade -
Theatres On The Bay
Dempsey Hill

MEDICAL

3 MINS DRIVE
Mount Elizabeth Hospital
Paragon Medical

5 MINS DRIVE
Camden Medical Centre
Health City Novena

6 MINS DRIVE
Gleneagles Hospital
Gleneagles Medical Centre

COUNTRY CLUB
1 MIN DRIVE
The American Club
The Tanglin Club

BUSINESS
8 MINS DRIVE
Central Business District

CONNECTIVITY

6 MINS WALK
Newton MRT Station

11 MINS WALK
Orchard MRT Station

2 MINS DRIVE
Central Expressway (CTE)

7 MINS DRIVE
Pan Island Expressway (PIE)

NATURE
2 MRT STOPS
Singapore Botanic Gardens

7 MINS DRIVE
Fort Canning Park

9 MINS DRIVE
Gardens By The Bay

EDUCATION (Within 1km)

9 MINS WALK
Anglo-Chinese School (Junior)

2 MINS DRIVE
EtonHouse International Pre-School

3 MINS DRIVE
LaSalle College Of The Arts

EDUCATION (Within 3km)

3 MINS DRIVE
St. Joseph's Institution Junior

6 MINS DRIVE
Anglo-Chinese School (Barker Road)
St. Joseph's Institution
Singapore Chinese Girls' School



ARTIST'S IMPRESSION

GOLDEN HALLMARK OF A TIMELESS HOME.

FREEHOLD AT KLIMT CAIRNHILL

Towering 36 storeys over Singapore's prime district 9, Klimt Cairnhill will be one of the most exceptional landmarks to rise through the Orchard skyline.

From the exquisite 2-bedroom apartments to the 6-bedroom penthouses, all 138 freehold homes are thoughtfully designed and meticulously crafted to bring exceptional value for the most discerning and influential people of our time.



GRAND ARRIVAL PORCH
ARTIST'S IMPRESSION

A HERITAGE HEIRLOOM WITH A STORY.

Connect the resplendent present with Cairnhill's glorious past.

A grand conserved bungalow, fashioned into a clubhouse with exquisite lounges and private dining rooms, provides a wonderful alternative to your entertainment experience. Create new memories within the ambience of history.



CONSERVED BUNGALOW CLUBHOUSE
ARTIST'S IMPRESSION



CLUBHOUSE VERANDAH
ARTIST'S IMPRESSION



CLUBHOUSE LOUNGE
ARTIST'S IMPRESSION

THE OASIS @ LEVEL 5

Klimt Cairnhill promises a bouquet of facilities carefully planted throughout the development. From vibrant pools and playgrounds teeming with life to calming gardens and lounges, each offers an oasis of respite.

Have a tranquil swim while the world bustles on beneath. Live where others vacation.

GETAWAY SPLENDOUR WITHOUT GETTING AWAY.



MULTIPLE POINTS OF VIEW IN FULL VIEW.

THE HORIZON TERRACE @ LEVEL 14

We all need time to be alone some time. To unwind body and mind.
The Meditation Deck and Chill Out Deck offer such calm, contemplative sanctuaries.

Enjoy tropical breeze and endless views of the green surrounds and the Singapore skyline.
From sunset to sunrise.



THE HORIZON TERRACE @ LEVEL 14 ARTIST'S IMPRESSION

FOR ILLUSTRATION PURPOSES ONLY. ARTIST'S IMPRESSION.

THE GARDEN COURT (LEVEL 1 - 4)

- 1 Grand Arrival Porch
- 2 Conserved Bungalow Clubhouse
- 3 Outdoor Function Terrace
- 4 Waterwall
- 5 Tapis Vert (Green Carpet Lawn)
- 6 The Love Sculpture
- 7 The Mosaic Carpet
- 8 The Tree Of Life
- 9 Art Nouveau Garden
- 10 Golden Tree Garden
- 11 Dining Terrace
- 12 Heated Jacuzzi
- 13 Outdoor Shower
- 14 BBQ Terrace
- 15 Picnic Lawn
- A Genset / Substation
- B Cable Chamber
- C Bin Center
- D Water Tank (Roof Level)

STACK 1		STACK 2		STACK 3		STACK 4		STACK 5			
4-BDRM DELUXE		3-BDRM PREMIUM		3-BDRM PREMIUM	4-BDRM PRESTIGE	2-BDRM PRIME		2-BDRM + 1 ELEGANT			
D1	D2	C3	C4	C1	C2	D3	D4	B1	B2	B3	B4



FOR ILLUSTRATION PURPOSES ONLY. ARTIST'S IMPRESSION.



THE OASIS
(LEVEL 5)

- 1 Pool Side Dining Pavilion
- 2 Lounge Deck
- 3 Event Lawn
- 4 Sun Deck
- 5 50M Lap Pool
- 6 Manicured Flower Beds
- 7 Palm Deck
- 8 Yoga Deck
- 9 Aqua Gym
- 10 Reflecting Pool
- 11 Leisure Pool
- 12 Children's Playground
- 13 Kid's Pool
- 14 Family Pavilion
- 15 Changing Room
- 16 Management Office
- 17 Outdoor Shower

STACK 1		STACK 2		STACK 3				STACK 4		STACK 5	
4-BDRM DELUXE		3-BDRM PREMIUM		3-BDRM PREMIUM		4-BDRM PRESTIGE		2-BDRM PRIME		2-BDRM + 1 ELEGANT	
D1	D2	C3	C4	C1	C2	D3	D4	B1	B2	B3	B4

FOR ILLUSTRATION PURPOSES ONLY. ARTIST'S IMPRESSION.



CAIRNHILL ROAD

THE HORIZON TERRACE (LEVEL 14)

- 1 Entertainment Room
- 2 Exercise Terrace
- 3 Gym
- 4 Chill Out Deck
- 5 Community Garden
- 6 Meditation Deck
- 7 Changing Room



ALL THAT GLITTERS CAN BE GOLD.



ARTIST'S IMPRESSION

FOR YOUR SELECTION

	03		04	02		05	01
Roof	ROOF				CORE	ROOF	
Level 36	PH1 #36-01					PH2 #35-01	
Level 35	D4			C4			
Level 34	D3			C4		B4	D2
Level 33	D3			C4		B4	D2
Level 32	D3			C4		B4	D2
Level 31	D3			C4		B4	D2
Level 30	D3			C4		B4	D2
Level 29	D3			C4		B4	D2
Level 28	C2	B2		C4		B4	D2
Level 27	C2	B2		C4		B4	D2
Level 26	C2	B2		C4		B4	D2
Level 25	C2	B2		C4		B4	D2
Level 24	C2	B2		C4		B4	D2
Level 23	C2	B2		C4		B4	D2
Level 22	C2	B2		C4		B4	D2
Level 21	C2	B2		C4		B4	D2
Level 20	C2	B2		C4		B4	D2
Level 19	C2	B2		C4		B4	D2
Level 18	C2	B2		C4		B4	D2
Level 17	C2	B2		C4	B4	D2	
Level 16	C2	B2		C4	B4	D2	
Level 15	C2	B2		C4	B4	D2	
Level 14	SKY TERRACE					SKY TERRACE	
Level 13	C2	B2		C4	B4	D2	
Level 12	C2	B2		C4	B4	D2	
Level 11	C2	B2		C4	B4	D2	
Level 10	C2	B2		C4	B4	D2	
Level 9	C2	B2		C4	B4	D2	
Level 8	C2	B2		C4	B4	D2	
Level 7	C2	B2		C4	B4	D2	
Level 6	C1	B1		C3	B3	D1	
Level 5	AMENITIES DECK AND POOL			MANAGEMENT OFFICE	AMENITIES DECK AND POOL		
Level 4	CARPARK				CARPARK		
Level 3	CARPARK				CARPARK		
Level 2	CARPARK				CARPARK		
Level 1	CARPARK / LOBBY				CARPARK / LOBBY		
Basement	CARPARK				CARPARK		

B1 - 829 sqft	B3 - 893 sqft	C1 - 1,496 sqft	C3 - 1,432 sqft	D1 - 2,056 sqft	D3 - 2,368 sqft	PH1- 4,898 sqft	PH2- 5,920 sqft
B2 - 829 sqft	B4 - 893 sqft	C2 - 1,496 sqft	C4 - 1,432 sqft	D2 - 2,056 sqft	D4 - 2,368 sqft		
2-BEDROOM PRIME	2-BEDROOM + 1 ELEGANT	3-BEDROOM PREMIUM		4-BEDROOM DELUXE	4-BEDROOM PRESTIGE	PENTHOUSE ROYAL	PENTHOUSE POSH

WHEN THE ONLY MISSING TOUCH IS YOURS.

2, 2+1, 3 AND 4-BEDROOM

The living spaces of these exclusive homes are designed with generous, well-considered and functional layouts, ensuring that a warm, welcoming interior ambience awaits you, all the time.

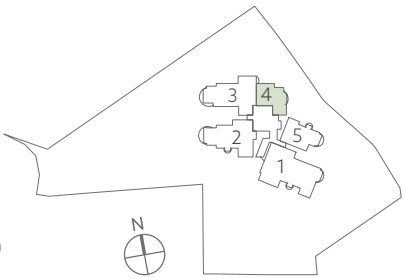
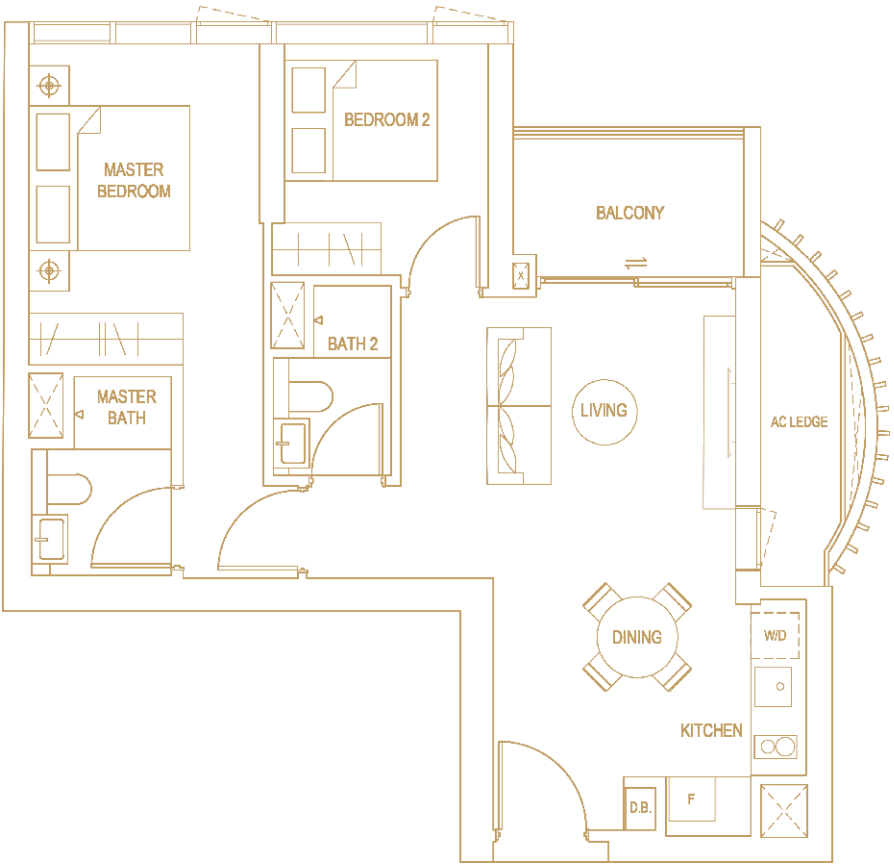
Select units are fashioned with private lift, elevating your privacy to a new level.



2-BEDROOM PRIME

TYPE B1
77 SQM / 829 SQFT

#06-04

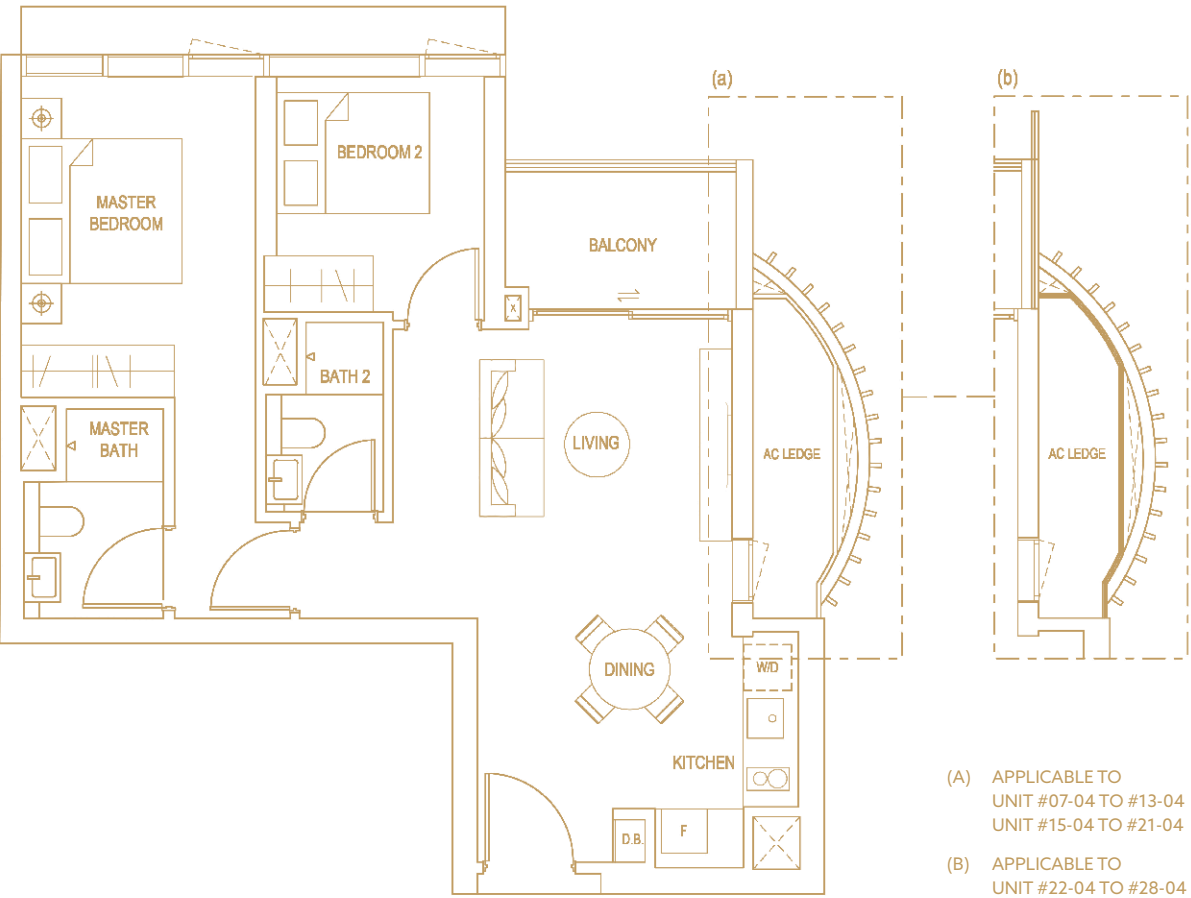


Plans are approximate measurements and are subject to amendments as maybe required or approved by the relevant authorities. Building Plan Approval: A1499-00001-2019-BP01 Dated 29 Jan 2021, A1499-00001-2019-BP02 Dated 8 Mar 2021 and A1499-00001-2019-BP03 Dated 14 May 2021

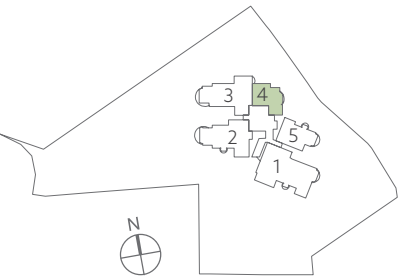
2-BEDROOM PRIME

TYPE B2
77 SQM / 829 SQFT

#07-04 TO #13-04
#15-04 TO #28-04



- (A) APPLICABLE TO
UNIT #07-04 TO #13-04
UNIT #15-04 TO #21-04
- (B) APPLICABLE TO
UNIT #22-04 TO #28-04

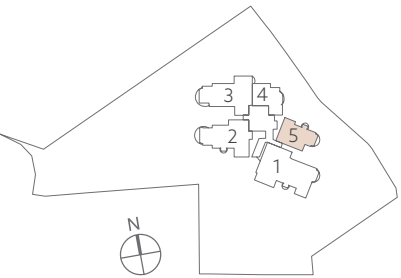
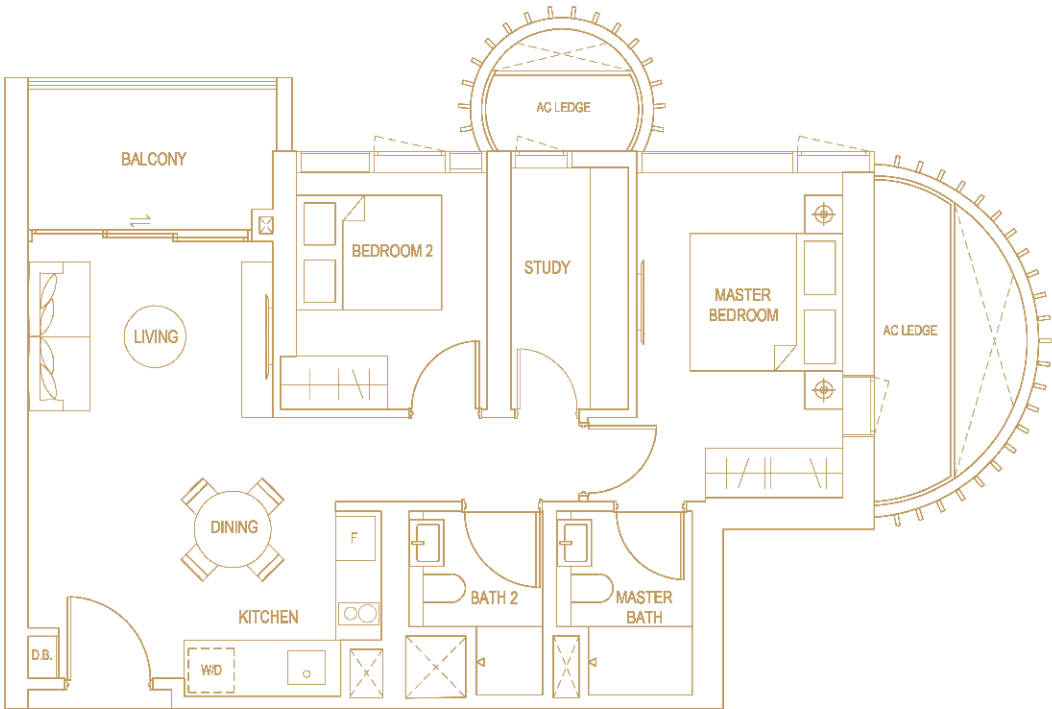


Plans are approximate measurements and are subject to amendments as maybe required or approved by the relevant authorities. Building Plan Approval: A1499-00001-2019-BP01 Dated 29 Jan 2021, A1499-00001-2019-BP02 Dated 8 Mar 2021 and A1499-00001-2019-BP03 Dated 14 May 2021

2-BEDROOM + 1 ELEGANT

TYPE B3
83 SQM / 893 SQFT

#06-05

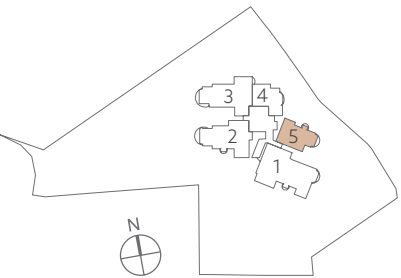
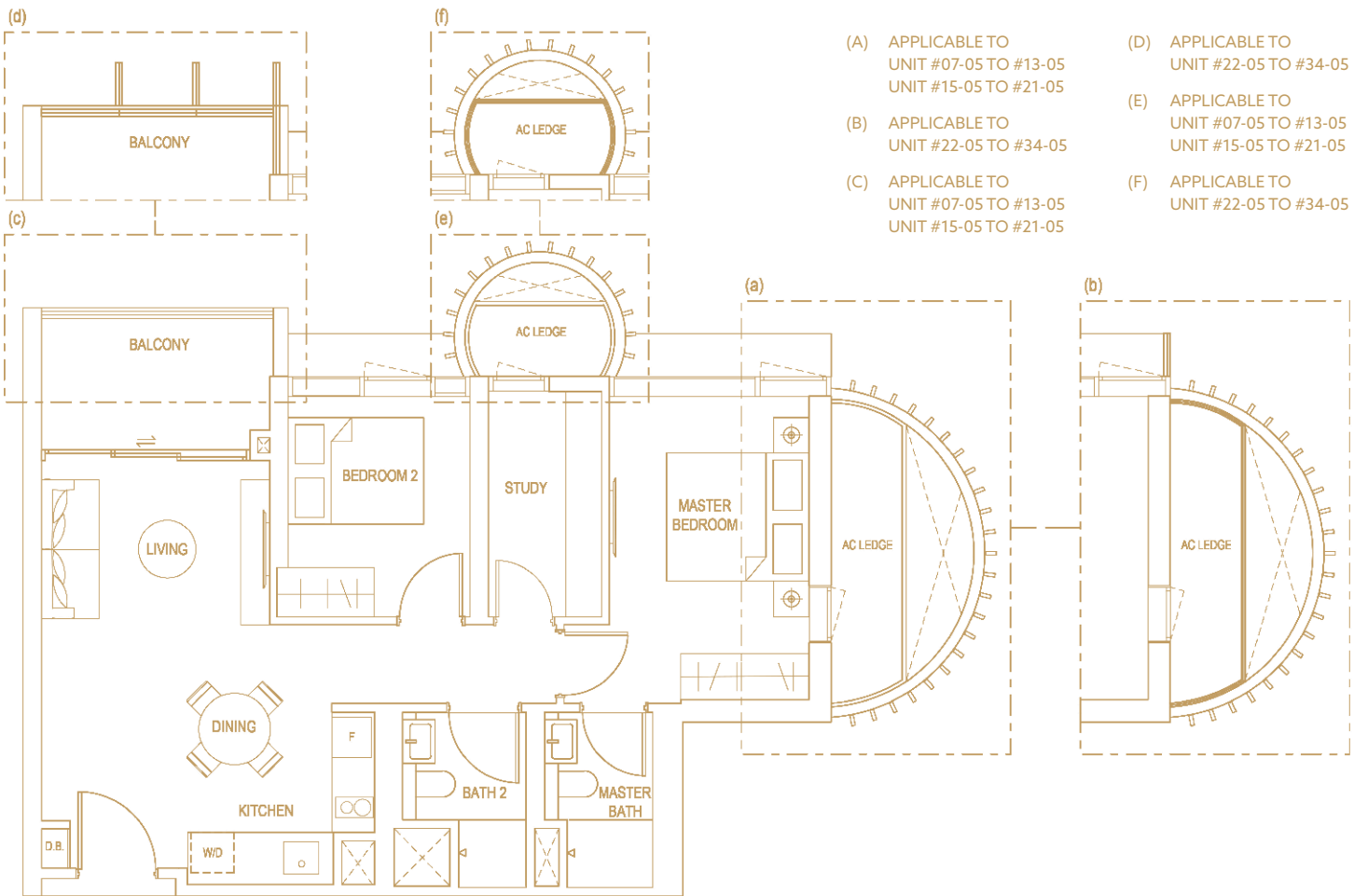


Plans are approximate measurements and are subject to amendments as maybe required or approved by the relevant authorities. Building Plan Approval: A1499-00001-2019-BP01 Dated 29 Jan 2021, A1499-00001-2019-BP02 Dated 8 Mar 2021 and A1499-00001-2019-BP03 Dated 14 May 2021

2-BEDROOM + 1 ELEGANT

TYPE B4
83 SQM / 893 SQFT

#07-05 TO #13-05
#15-05 TO #34-05

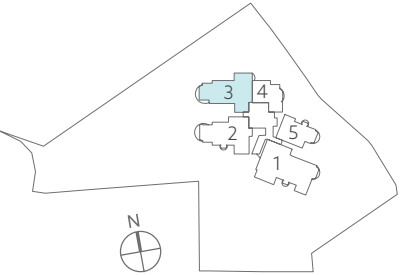
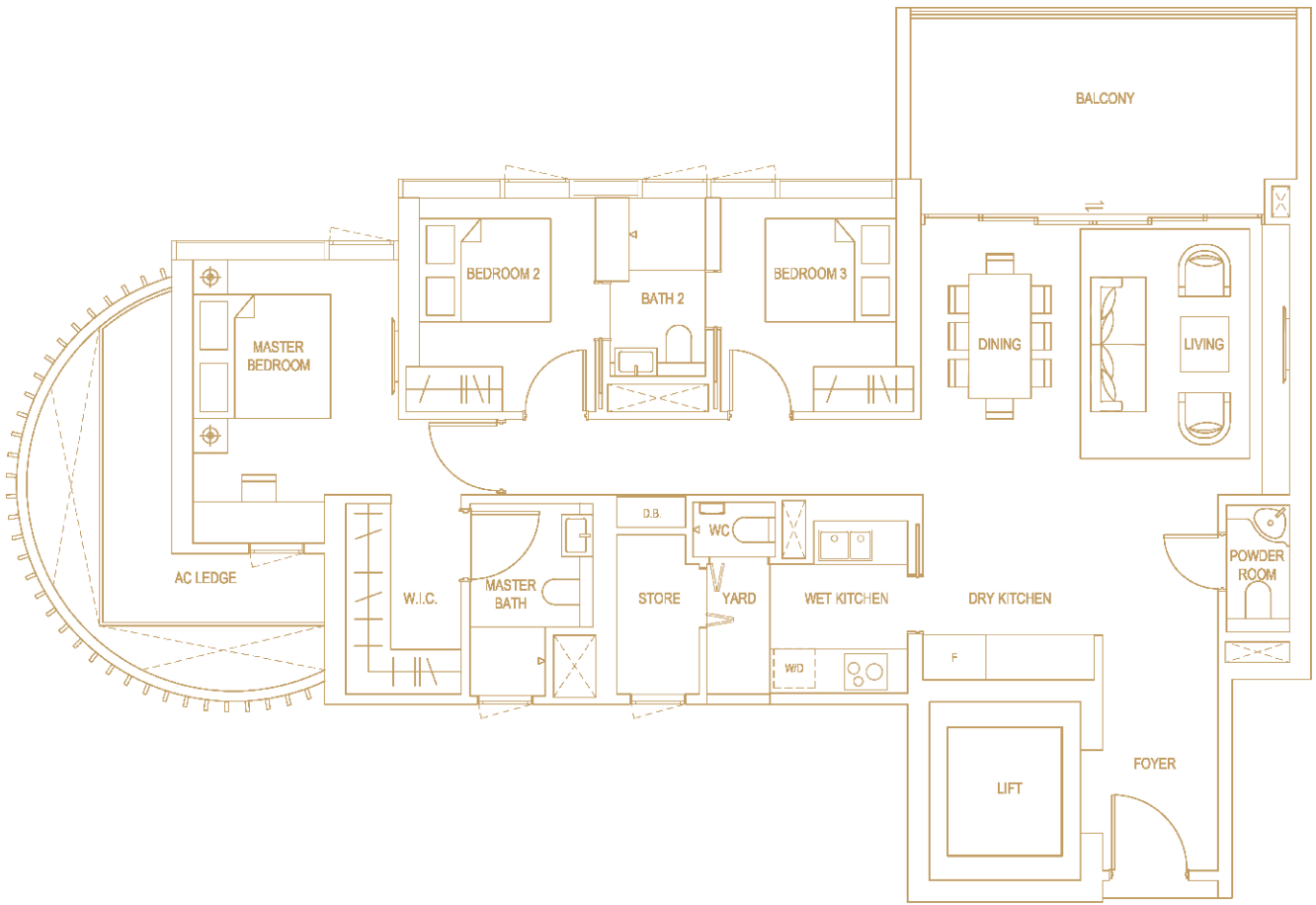


Plans are approximate measurements and are subject to amendments as maybe required or approved by the relevant authorities. Building Plan Approval: A1499-00001-2019-BP01 Dated 29 Jan 2021, A1499-00001-2019-BP02 Dated 8 Mar 2021 and A1499-00001-2019-BP03 Dated 14 May 2021

3-BEDROOM PREMIUM

TYPE C1
139 SQM / 1,496 SQFT

#06-03

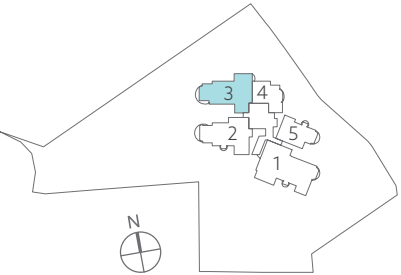
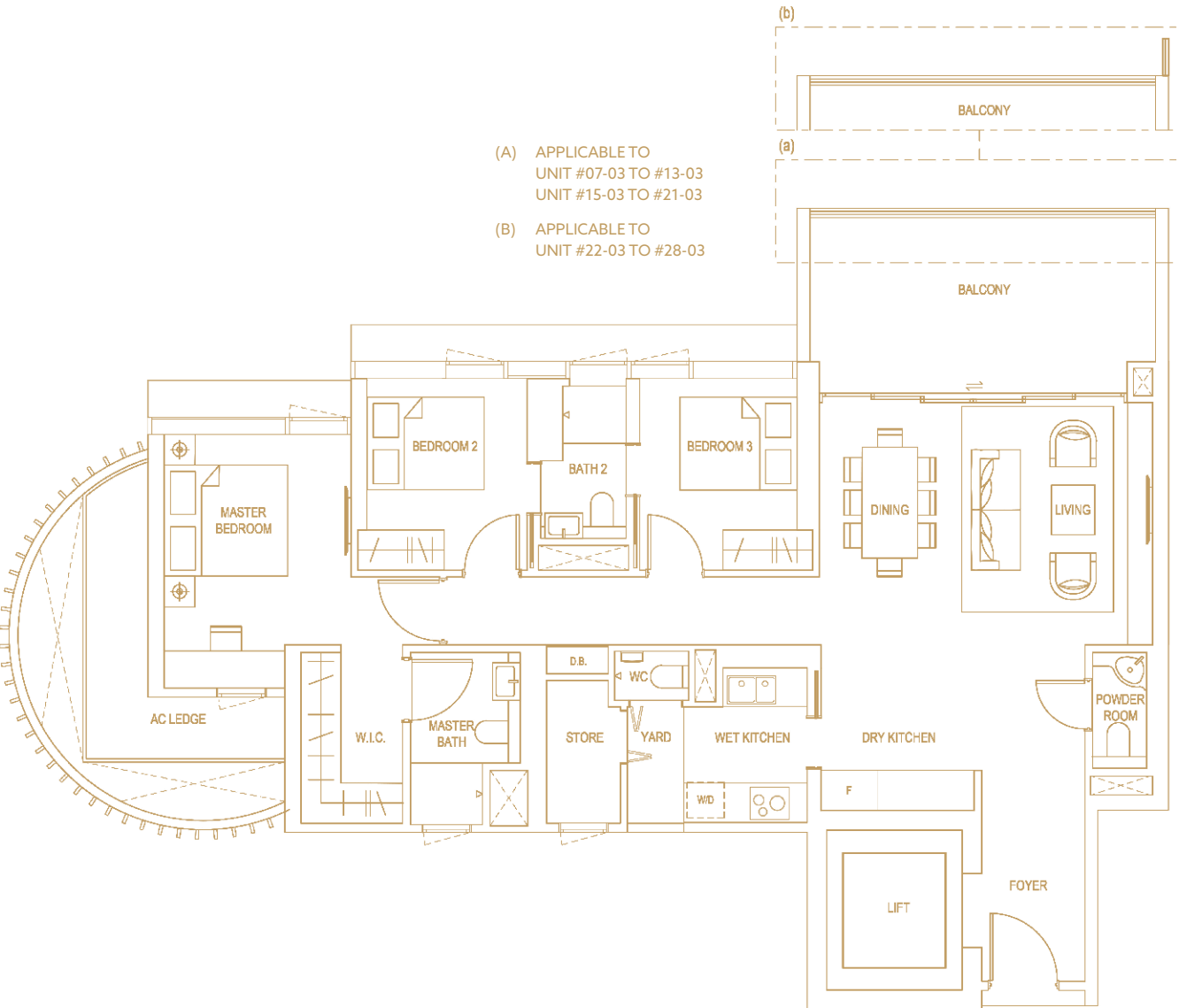


Plans are approximate measurements and are subject to amendments as maybe required or approved by the relevant authorities. Building Plan Approval: A1499-00001-2019-BP01 Dated 29 Jan 2021, A1499-00001-2019-BP02 Dated 8 Mar 2021 and A1499-00001-2019-BP03 Dated 14 May 2021

3-BEDROOM PREMIUM

TYPE C2
139 SQM / 1,496 SQFT

#07-03 TO #13-03
#15-03 TO #28-03

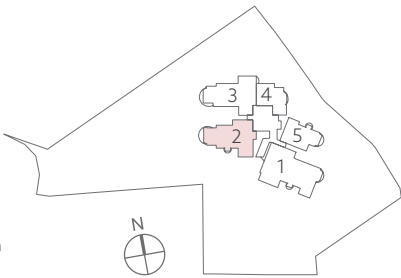
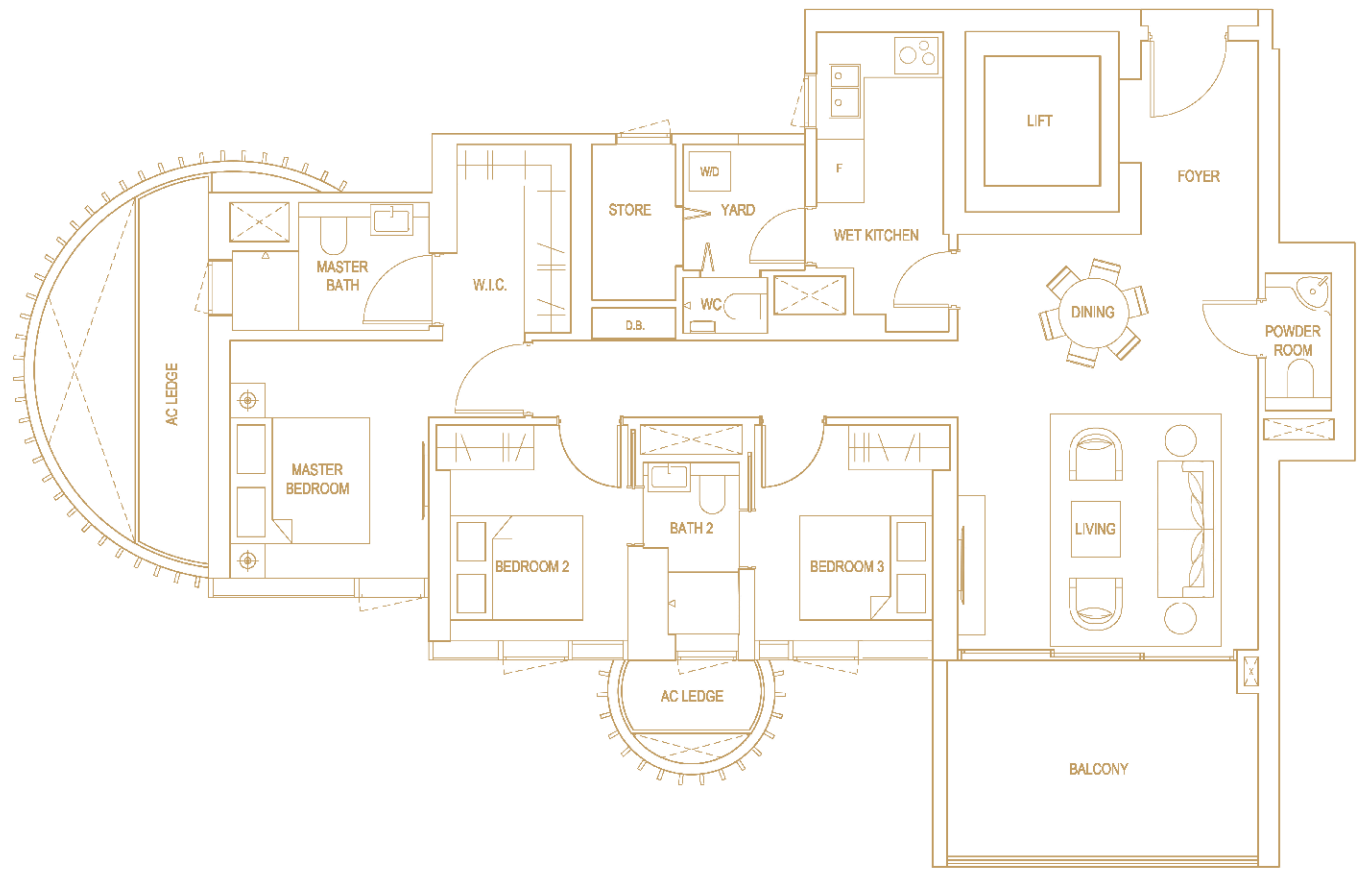


Plans are approximate measurements and are subject to amendments as maybe required or approved by the relevant authorities. Building Plan Approval: A1499-00001-2019-BP01 Dated 29 Jan 2021, A1499-00001-2019-BP02 Dated 8 Mar 2021 and A1499-00001-2019-BP03 Dated 14 May 2021

3-BEDROOM PREMIUM

TYPE C3
133 SQM / 1,432 SQFT

#06-02

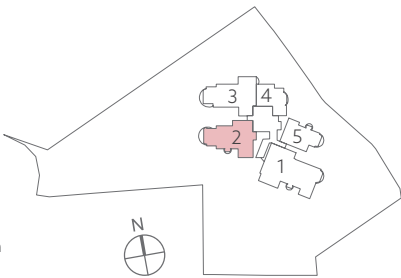
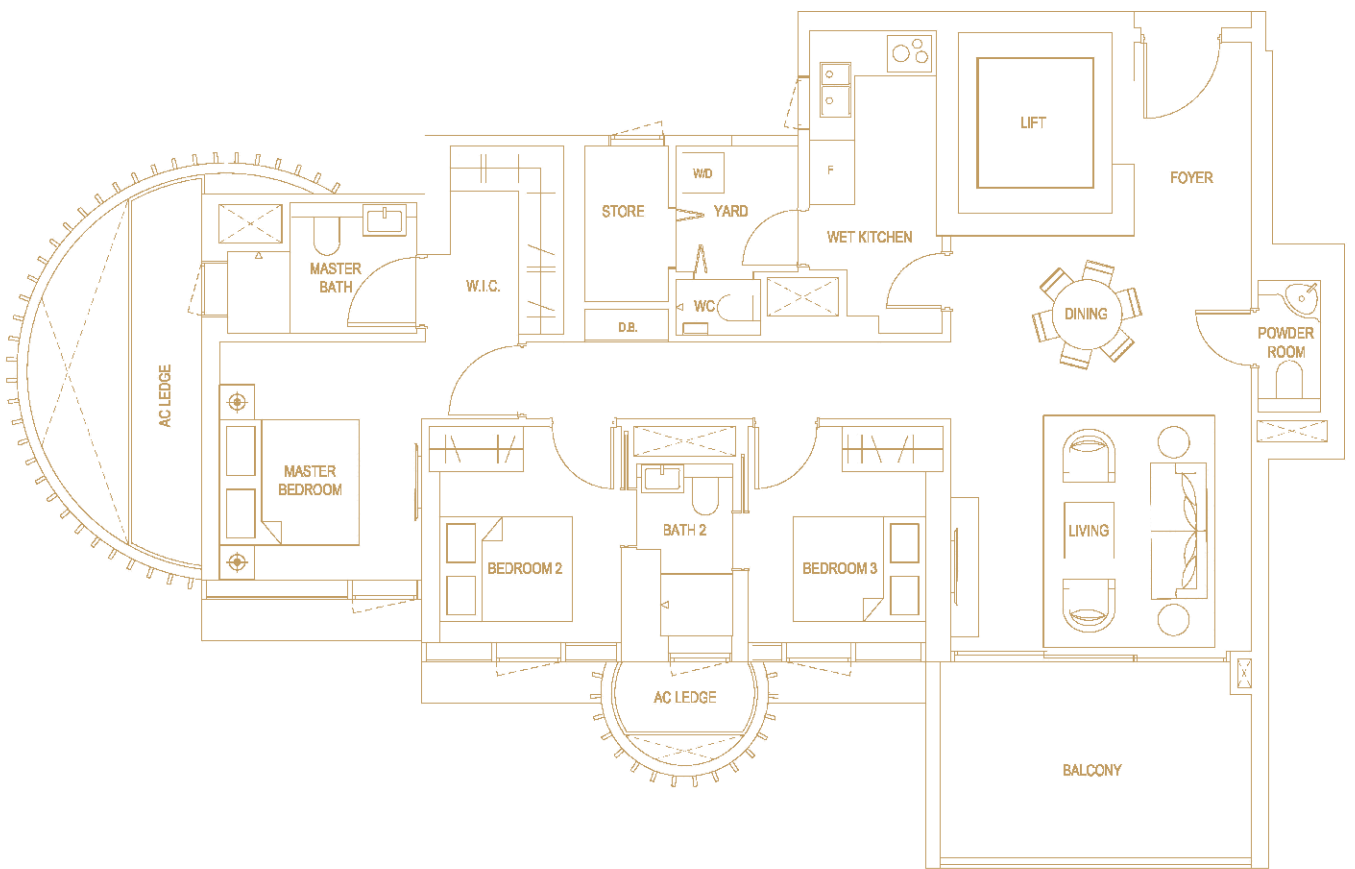


Plans are approximate measurements and are subject to amendments as maybe required or approved by the relevant authorities. Building Plan Approval: A1499-00001-2019-BP01 Dated 29 Jan 2021, A1499-00001-2019-BP02 Dated 8 Mar 2021 and A1499-00001-2019-BP03 Dated 14 May 2021

3-BEDROOM PREMIUM

TYPE C4
133 SQM / 1,432 SQFT

#07-02 TO #13-02
#15-02 TO #35-02



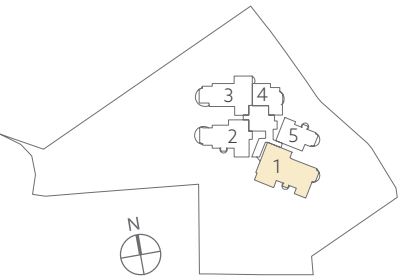
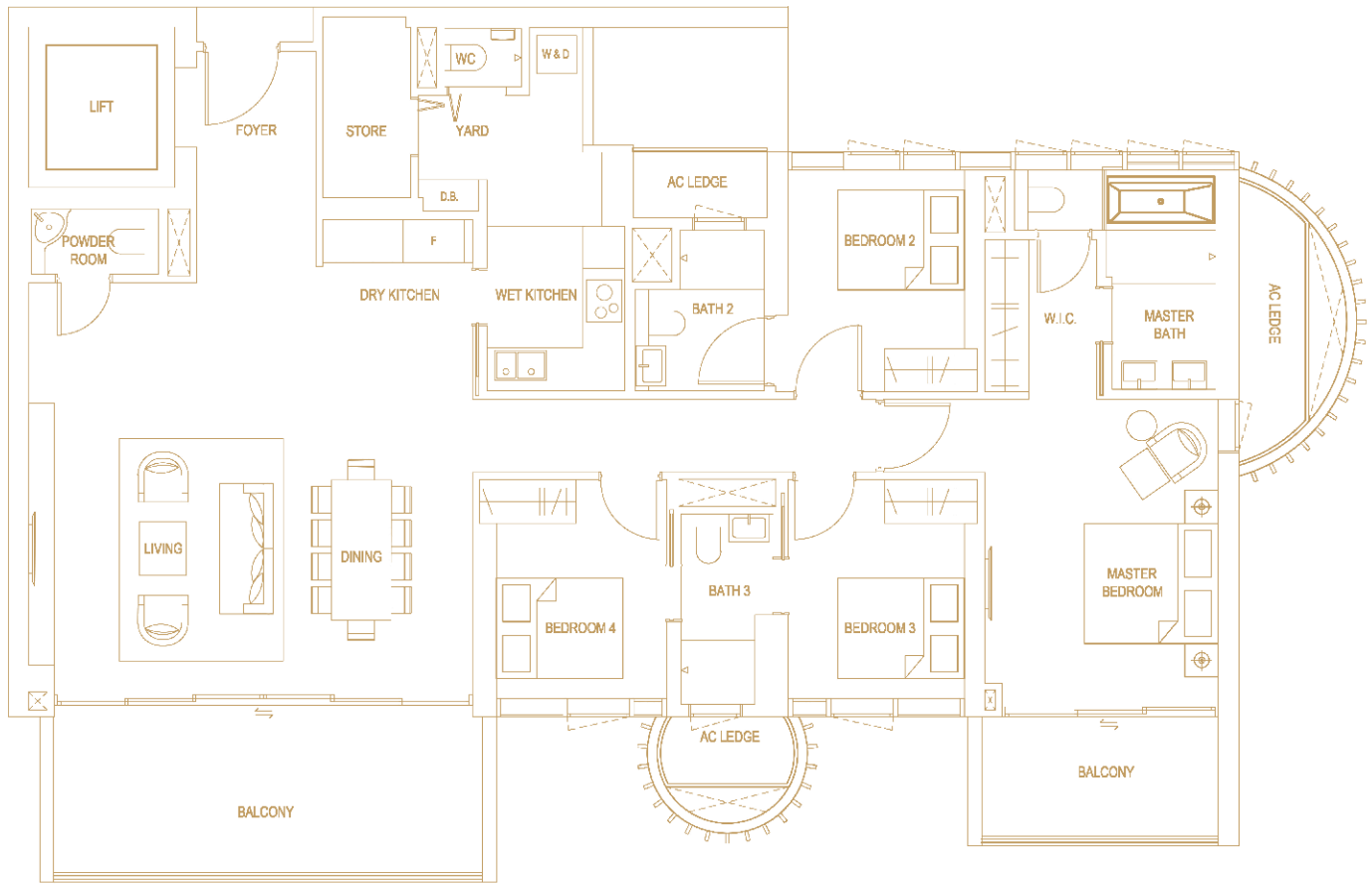
Plans are approximate measurements and are subject to amendments as maybe required or approved by the relevant authorities. Building Plan Approval: A1499-00001-2019-BP01 Dated 29 Jan 2021, A1499-00001-2019-BP02 Dated 8 Mar 2021 and A1499-00001-2019-BP03 Dated 14 May 2021

4-BEDROOM DELUXE

TYPE D1

191 SQM / 2,056 SQFT

#06-01



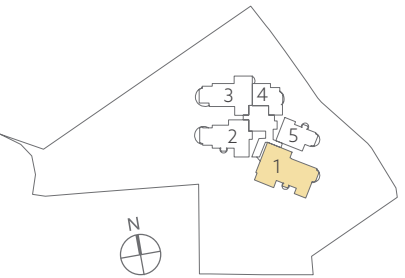
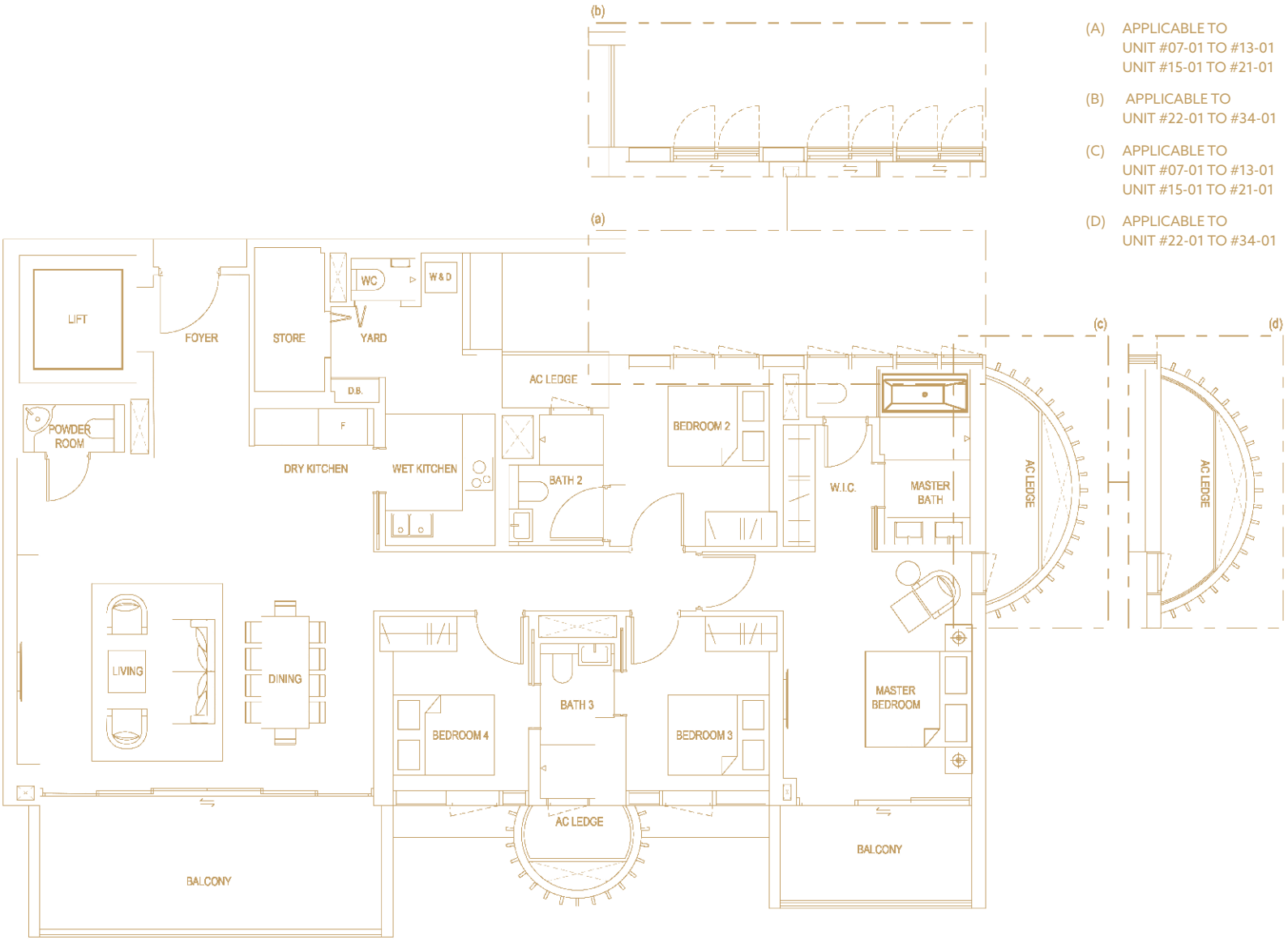
Plans are approximate measurements and are subject to amendments as maybe required or approved by the relevant authorities. Building Plan Approval: A1499-00001-2019-BP01 Dated 29 Jan 2021, A1499-00001-2019-BP02 Dated 8 Mar 2021 and A1499-00001-2019-BP03 Dated 14 May 2021

4-BEDROOM DELUXE

TYPE D2

191 SQM / 2,056 SQFT

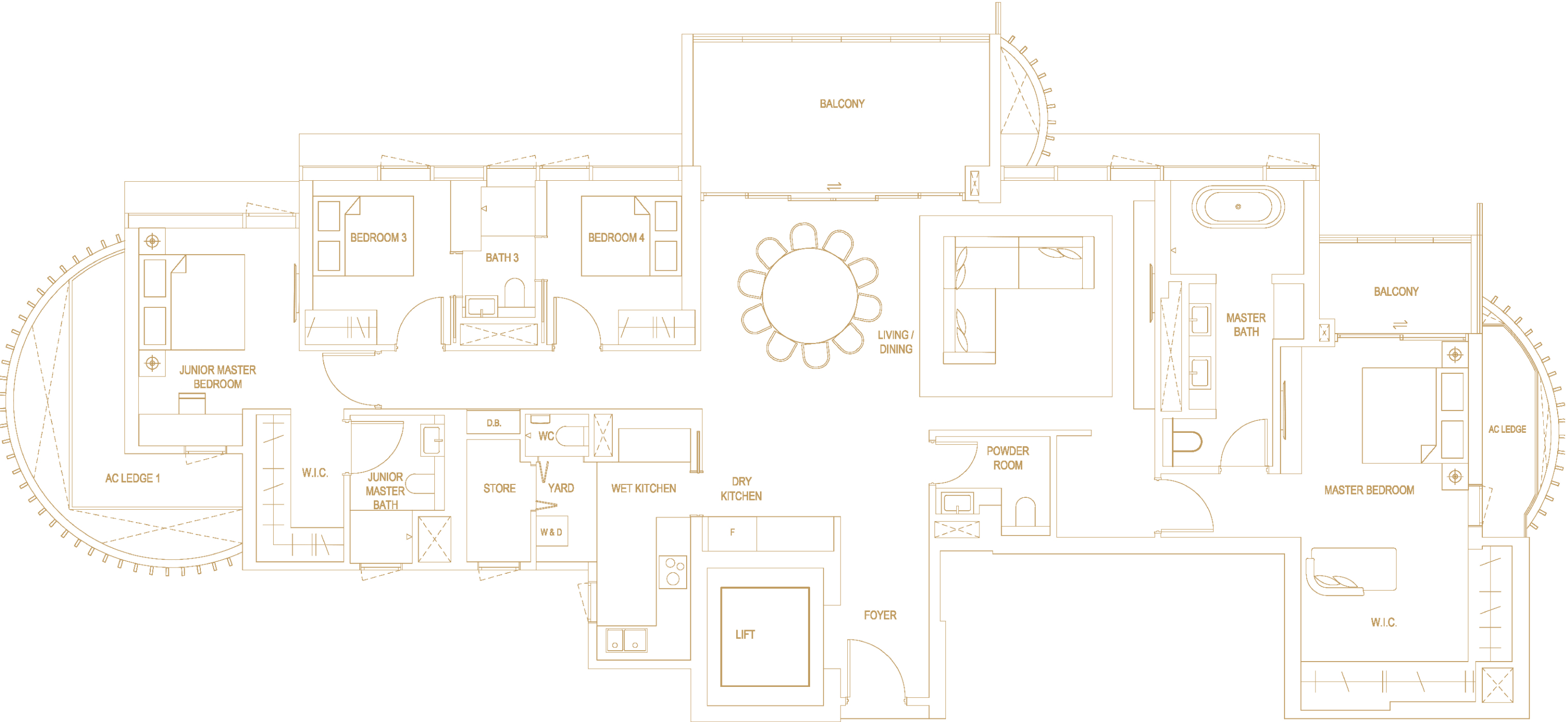
#07-01 TO #13-01
#15-01 TO #34-01



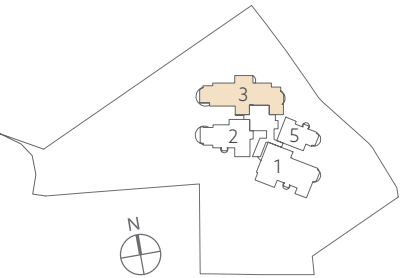
Plans are approximate measurements and are subject to amendments as maybe required or approved by the relevant authorities. Building Plan Approval: A1499-00001-2019-BP01 Dated 29 Jan 2021, A1499-00001-2019-BP02 Dated 8 Mar 2021 and A1499-00001-2019-BP03 Dated 14 May 2021

4-BEDROOM PRESTIGE

TYPE D3
220 SQM / 2,368 SQFT
#29-03 TO #34-03



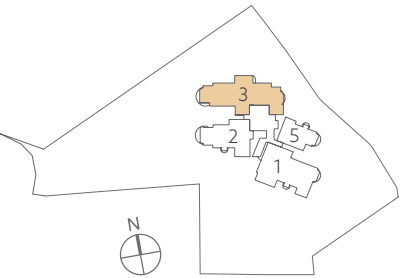
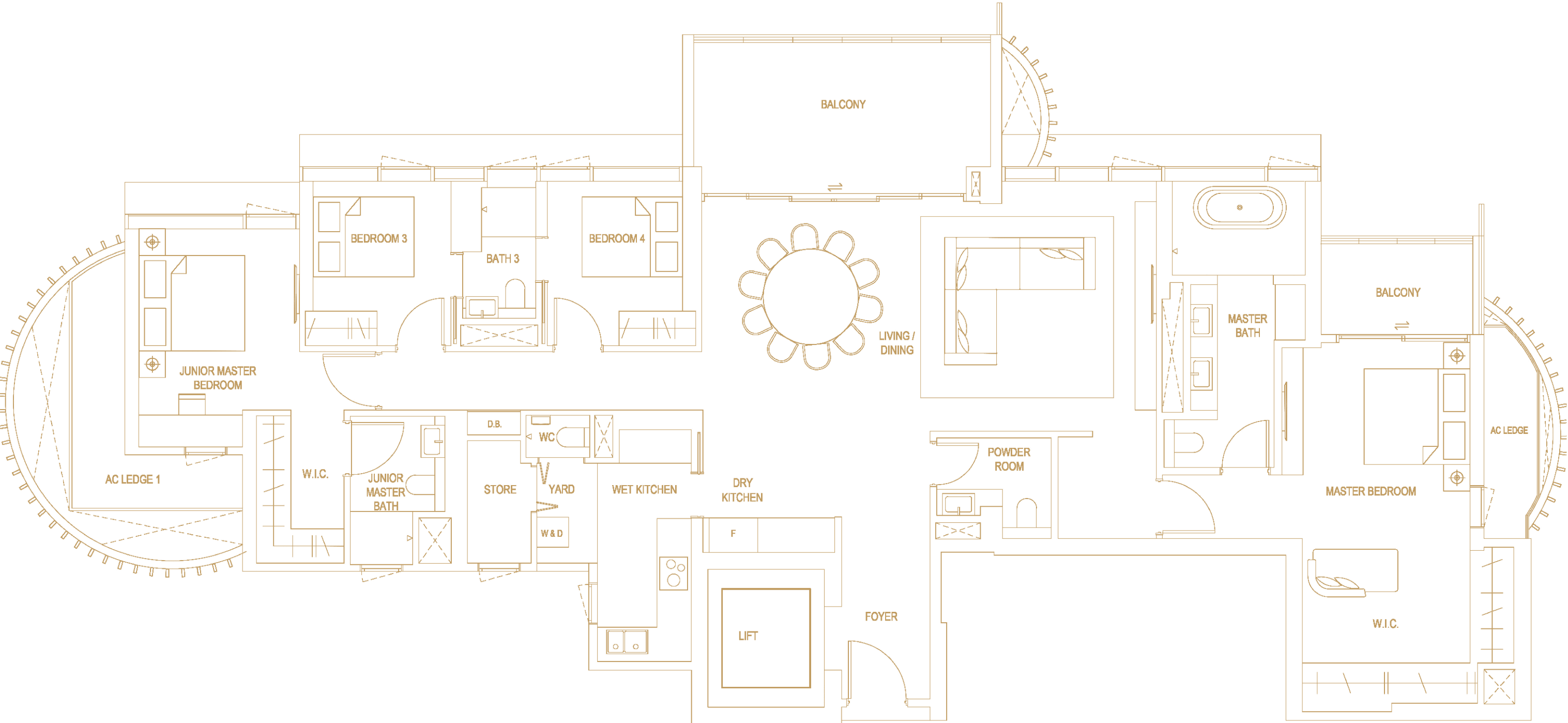
Plans are approximate measurements and are subject to amendments as maybe required or approved by the relevant authorities. Building Plan Approval: A1499-00001-2019-BP01 Dated 29 Jan 2021, A1499-00001-2019-BP02 Dated 8 Mar 2021 and A1499-00001-2019-BP03 Dated 14 May 2021



4-BEDROOM PRESTIGE

TYPE D4
220 SQM / 2,368 SQFT

#35-03



WHEN YOU HAVE ROOM
AT THE TOP.

2 RARIFIED PENTHOUSES

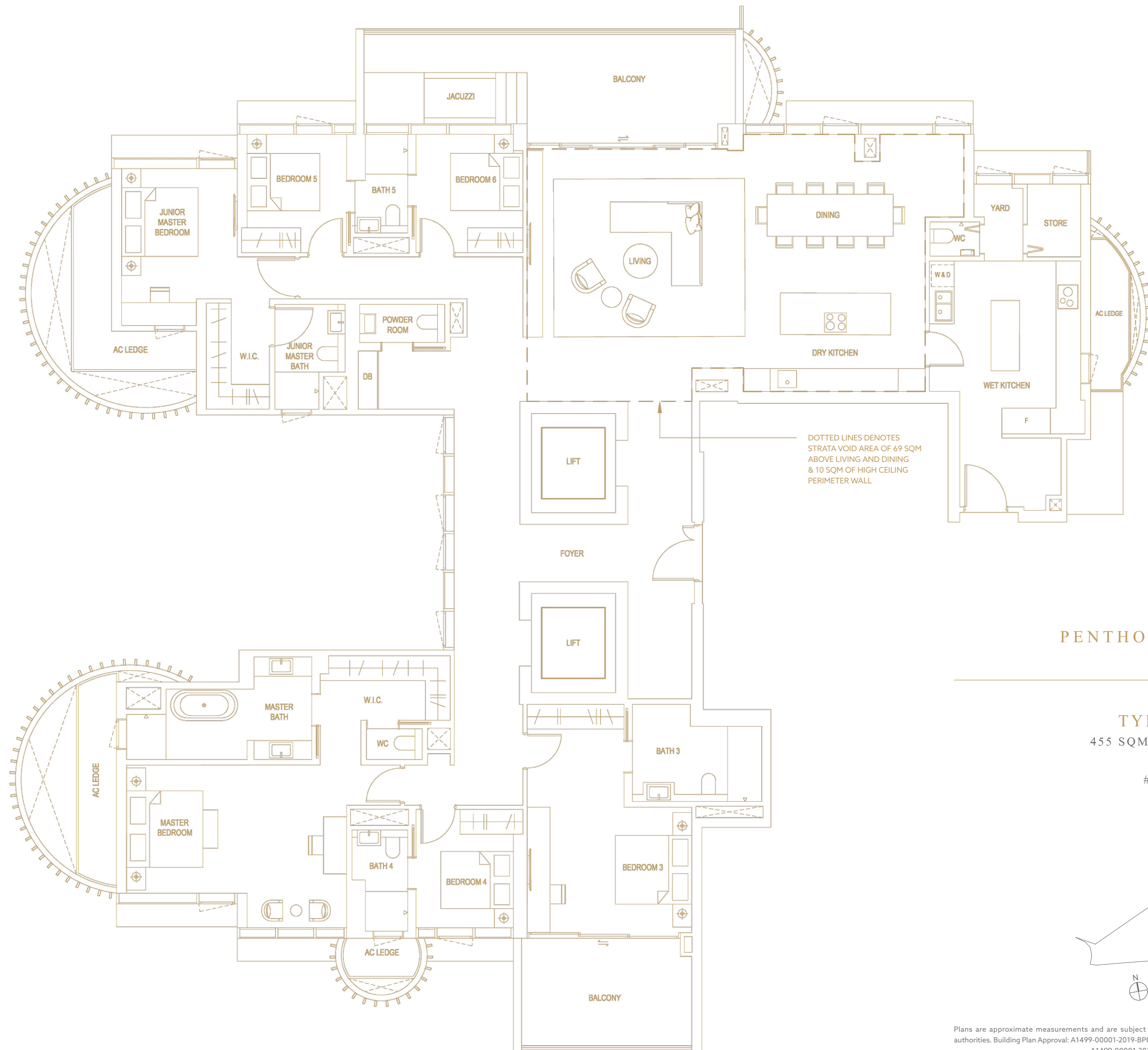
Not one, but two rare penthouses that afford you
the luxury of space.

One, a double-storey residence with a
breathtakingly high double-volume living space.
The other, an expansive domicile spread over a
single floorplate.

Both come with six lavishly
appointed bedrooms, giving abundant space and
opportunities for your family to grow.



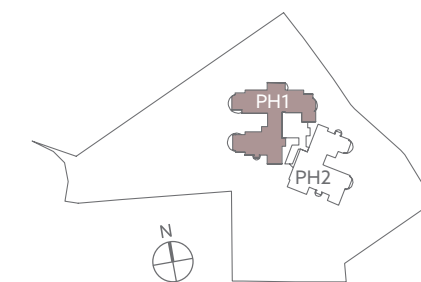
PENTHOUSE POSH - LIVING
ARTIST'S IMPRESSION



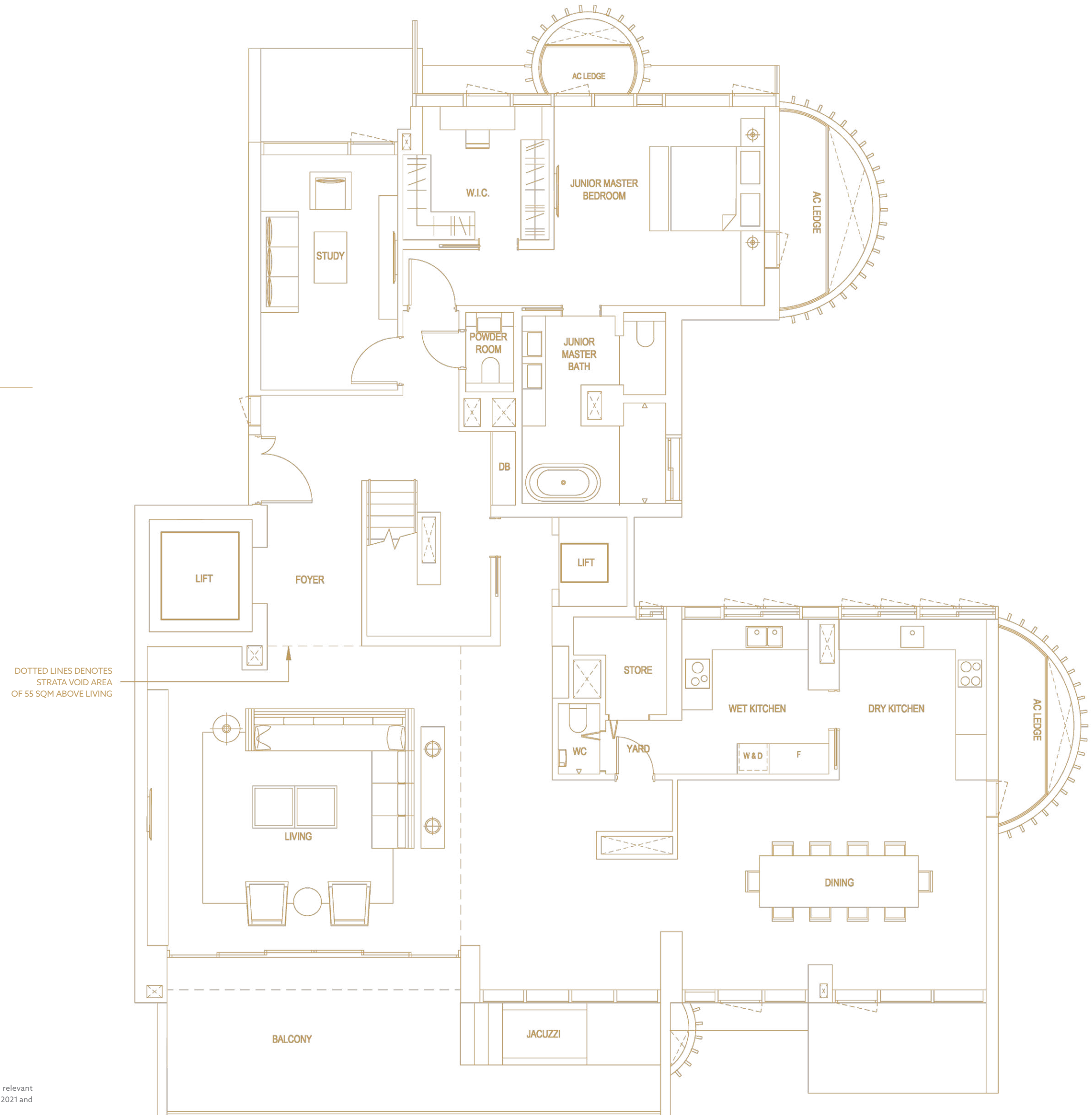
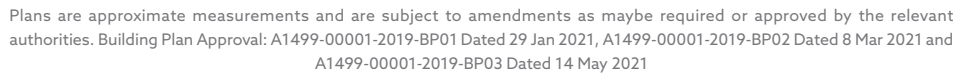
PENTHOUSE ROYAL

TYPE PH1
455 SQM / 4,898 SQFT

#36-01



Plans are approximate measurements and are subject to amendments as maybe required or approved by the relevant authorities. Building Plan Approval: A1499-00001-2019-BP01 Dated 29 Jan 2021, A1499-00001-2019-BP02 Dated 8 Mar 2021 and A1499-00001-2019-BP03 Dated 14 May 2021

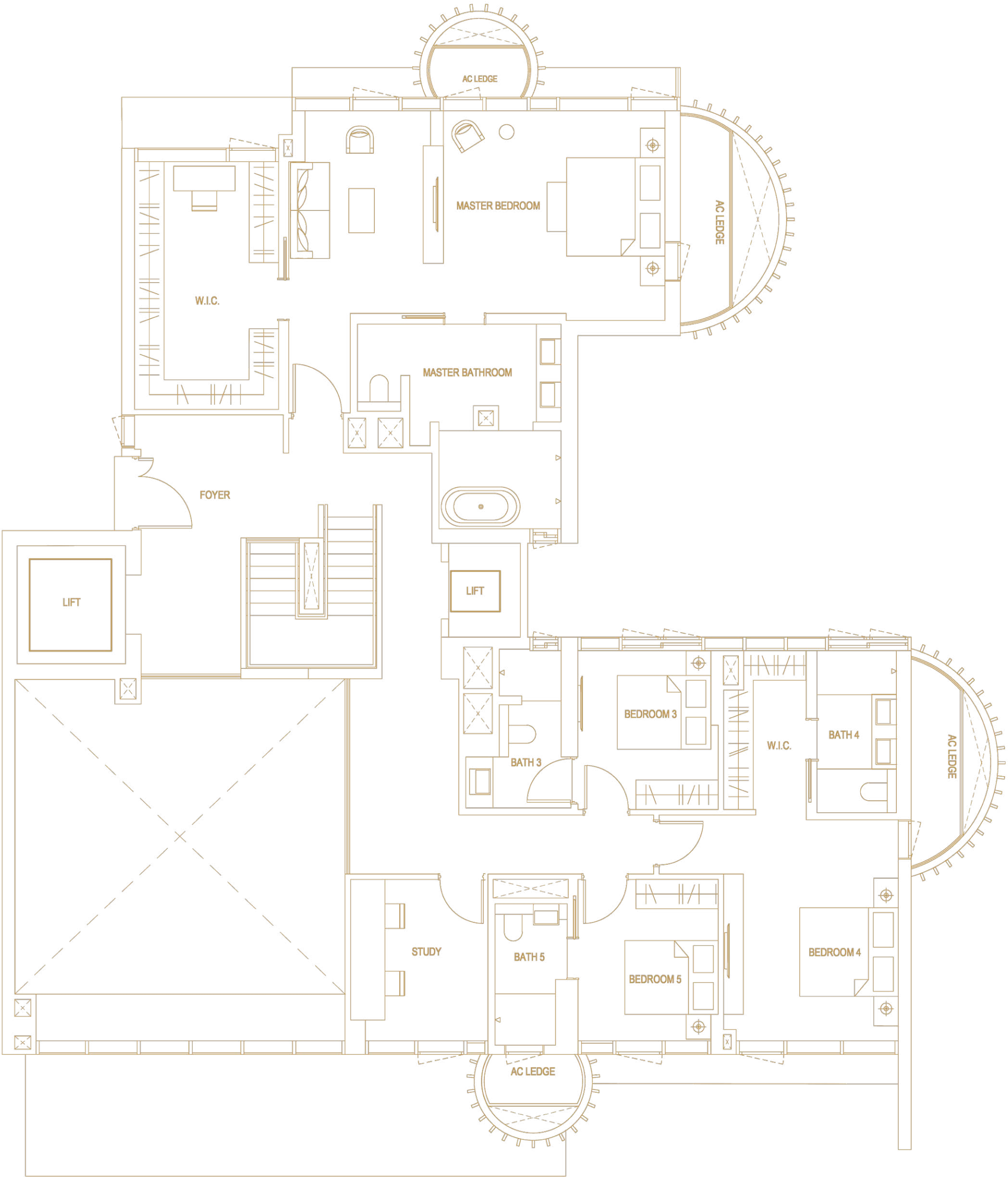
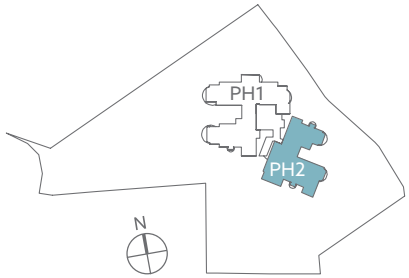


PENTHOUSE POSH

TYPE PH2

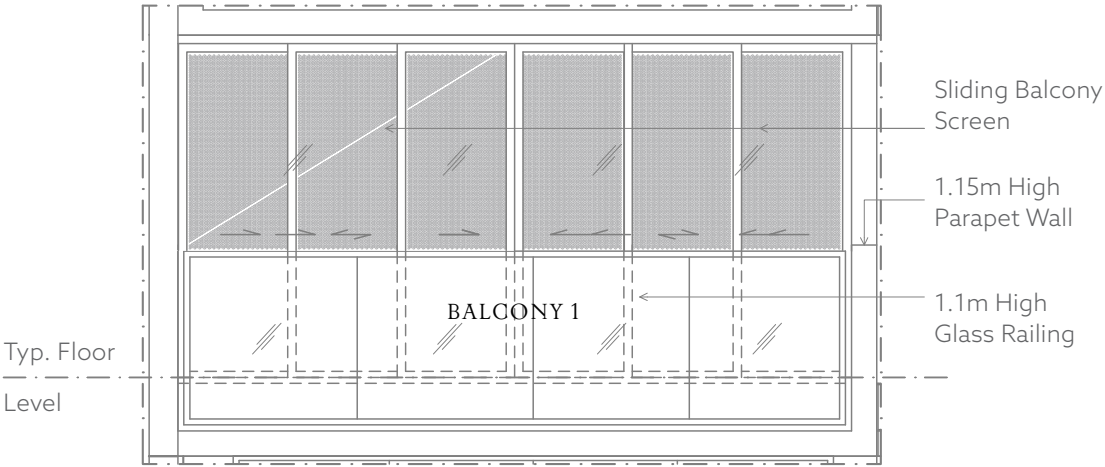
#35-01

(UPPER STOREY)

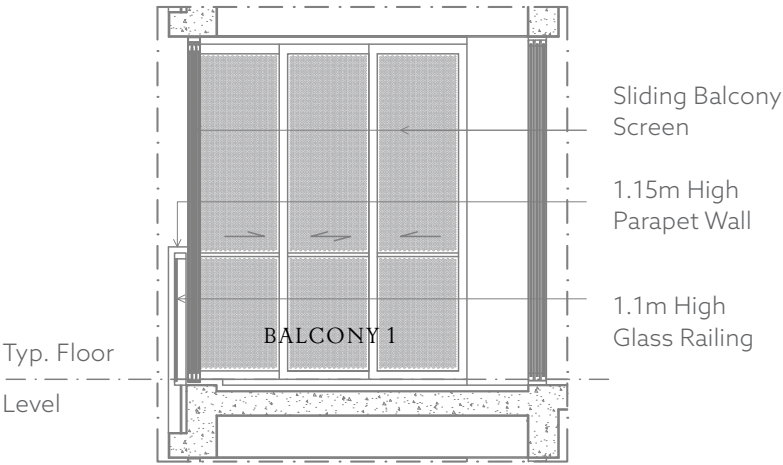


Plans are approximate measurements and are subject to amendments as maybe required or approved by the relevant authorities. Building Plan Approval: A1499-00001-2019-BP01 Dated 29 Jan 2021, A1499-00001-2019-BP02 Dated 8 Mar 2021 and A1499-00001-2019-BP03 Dated 14 May 2021

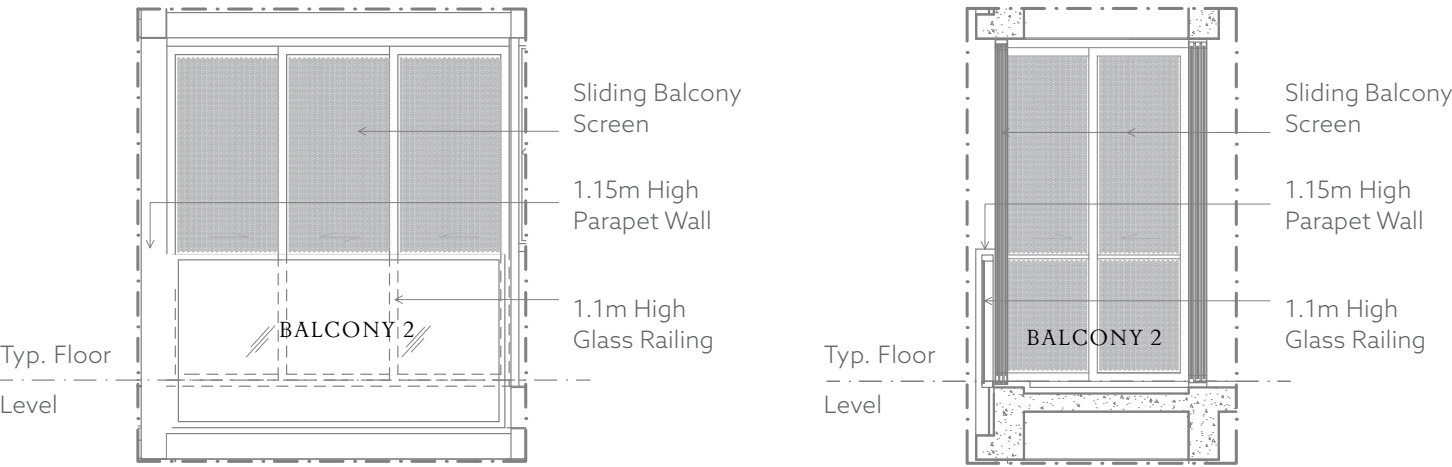
BALCONY SCREEN DETAILS



BALCONY 1 FRONT ELEVATION (FULLY CLOSED)



TYPICAL BALCONY 1 SECTION



TYPICAL BALCONY 2 SECTION

DEVELOPER



LOW KENG HUAT
(SINGAPORE) LIMITED

Low Keng Huat (Singapore) Limited ("LKHS") is a builder established since 1969. Today its business has grown to encompass property development, investments and hotels. Major development projects include Duchess Residences, One North Residences, Kismis Residences, Parkland Residences, The Minton, Uptown @ Farrer and Paya Lebar Square. Its main investment properties include retail malls at Paya Lebar Square and BT Centre in Singapore. It focuses on constructing in-house development and investment projects. LKHS owns and operates a deluxe hotel in Perth (Australia) under the in-house brand Duxton Hotel. In addition, LKHS owns serviced apartments in Singapore, Citadines Balestier and Lyf @ Farrer, and both are operated and managed by The Ascott Group. Its other hospitality-related business in Singapore is the food and beverage business under our in-house brand name Carnivore.



AWARDS



THE ART OF GOLDEN LIVING.

theklimtcairnhill.com

ARCHITECT



DP Architects is a leading multidisciplinary design practice in Asia with 900 staff in 16 global offices strategically linked from Shanghai to London, and 8 specialist companies providing a range of services from architecture and urban planning to engineering, sustainable design, interior, facade and landscape design. Founded in 1967, it has built a deep portfolio of works including People's Park Complex, Esplanade – Theatres on the Bay, Our Tampines Hub, Sengkang Hospital Campus and Paya Lebar Quarters. From Singapore, the ideas and techniques of the firm have since expanded to projects across 77 countries. The DPA group of companies function as One Global Studio; harnessing the collective design experience and knowledge of its people as well as tapping into its rich pool of resources and data to deliver fully coordinated, innovative and well-calibrated design solutions at all scales, contributing to a city's long-term sustainability and socio-economic health.

LANDSCAPE ARCHITECT



STX Landscape Architects (formerly Sitetectonix Pte Ltd) are professional landscape architects and urban designers in Singapore. A track record of over 25 years in the design industry has endowed STX with a rich and diversified portfolio of commercial, institutional, hospitality and residential projects at all scales, spanning throughout Asia, many of which have won recognition and awards. STX received the Award of Excellence at the International Federation of Landscape Architects Congress in 2014 for the National University of Singapore University Town project; The President's Design Award Singapore, Design of the Year for Oasia Downtown Hotel in 2018, The Award of Excellence at the IFLA Congress for Archipelago in 2019.

A PREMIUM DEVELOPMENT BY



**LOW KENG HUAT
(SINGAPORE) LIMITED**

Developer Name: Glopeak Development Pte Ltd • Co. Registration No.: 201804391G • Tenure: Freehold • Legal Description: Lot(s) 00819C, 00838W, 00836C and 00844T TS 27 at Cairnhill Road • Developer's Licence: C1378 • Encumbrances: Mortgage registered in favour of United Overseas Bank Limited • Building Plan Approval: A1499-00001-2019-BP01 Dated 29 Jan 2021, A1499-00001-2019-BP02 Dated 8 Mar 2021 and A1499-00001-2019-BP03 Dated 14 May 2021 • Expected date of Vacant Possession: 3 Oct 2025 • Expected date of Legal Completion: 3 Oct 2028

DISCLAIMER: While every reasonable care has been taken in preparing this brochure and in constructing the models and showflats, the Developer and the marketing agents cannot be held responsible for any inaccuracies or omissions. All information, specifications, renderings, visual representations and plans are current at the time of publication and are subject to change as may be required by the Developer and/or the competent authorities and shall not be regarded as statements or representations of facts. Visual representations, models, drawings, showflat displays and illustrations, renderings, photographs, and other graphic representations and references portray artistic impressions only and cannot be regarded as a representation of fact. Floor areas (inclusive of A/C ledge, balcony and void areas) are approximate measurements and subject to the final survey. All plans are subject to amendments as directed and/or approved by the building authorities. The Sales and Purchase Agreement shall form the entire agreement between the Developer and the Purchaser and shall supersede all statements, representations or promises (whether written or oral) made prior to the signing of the Sale and Purchase Agreement and shall in no way be modified by any statements, representations or promises made by the Developer and its agents.

DESIGN BY DEEPOCKET | COPYWRITING BY KORABO